

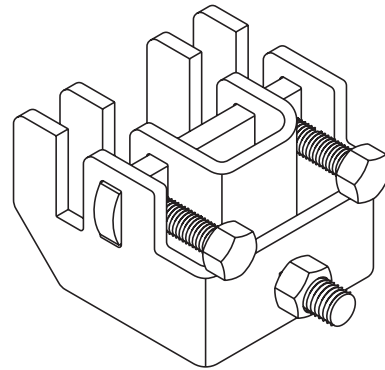


Bar Joist Sway Brace Attachment

825

Technical Features

- **Sizes available** : Fits steel bar joist to a maximum thickness of 9.5mm / 3/4".
- **Functions** : To attach sway and hanger assemblies to steel bar joist structural members.
- **Features** : Permits secure and concentric connection to steel when drilling or welding is not allowed or desired. Break-off head bolt design assures verification of proper installation.
NOTE : Must be used with Series 900 Brace Fittings.
- **Material** : Carbon steel
- **Finish** : Plain or electrogalvanized

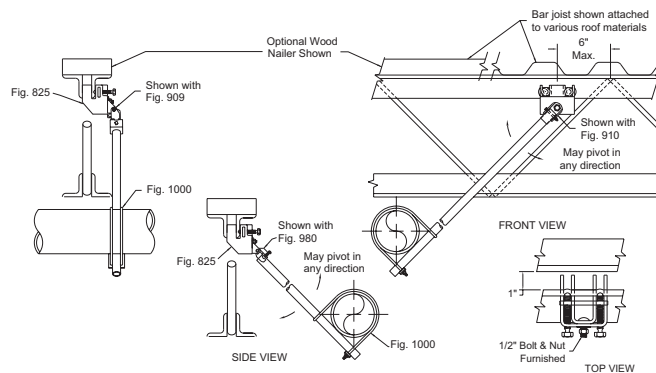


1 - When used with other Tolco® bracing products.

Bar Joist Sway Brace Attachment - 825

Physical Data

Max. Bar Joist Flange Thickness (mm / inch)	Max. Horizontal Design Load (kg / lbs)	Box Quantity	Finish	Box Weight (kg / lbs)	Reference
9.5 / 0.375	914 / 2015	10	Electrogalvanized	10 / 21	825G
9.5 / 0.375	914 / 2015	10	Plain	10 / 21	825



Installation Instructions

Maximum design load is 914 kg (2015 lbs). Maximum bar joist flange thickness shall not exceed 9.5mm (0.375").

U.L. listed as hanger attachment DN150/6" pipe maximum.

Ensure that all structural members supporting the sprinkler system piping can withstand the expected forces.

Slide the bar joist flange all the way into the sway brace attachment notches until the flange bottoms out against the bottom of all four notches. Tighten the two (2) set bolts on the sway brace attachment against the bar joist flange until the set bolt head breaks off. Designed, tested, and approved to be used only with other Tolco® bracing products available from Viking SupplyNet®.